



# Stonestreet Green Solar

ES Volume 3: Figures

Chapter 12: Socio-Economics

Figures 12.1 - 12.2

PINS Ref: EN010135

Doc Ref. 5.3

Version 1

June 2024

---

APFP Regulation 5(2)(a)

Planning Act 2008

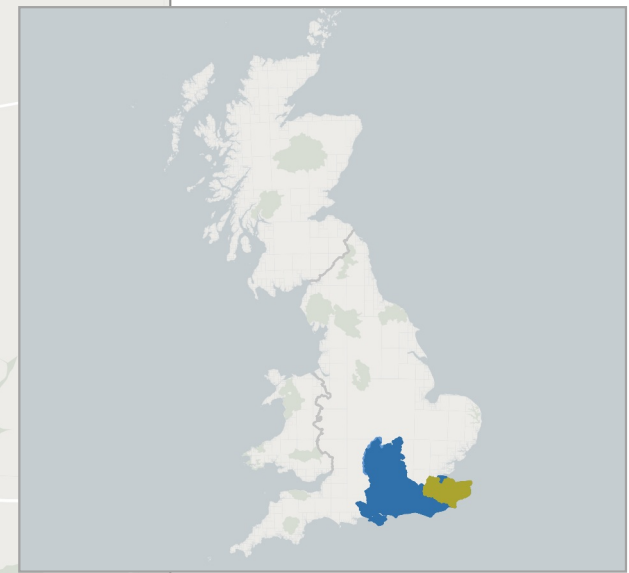
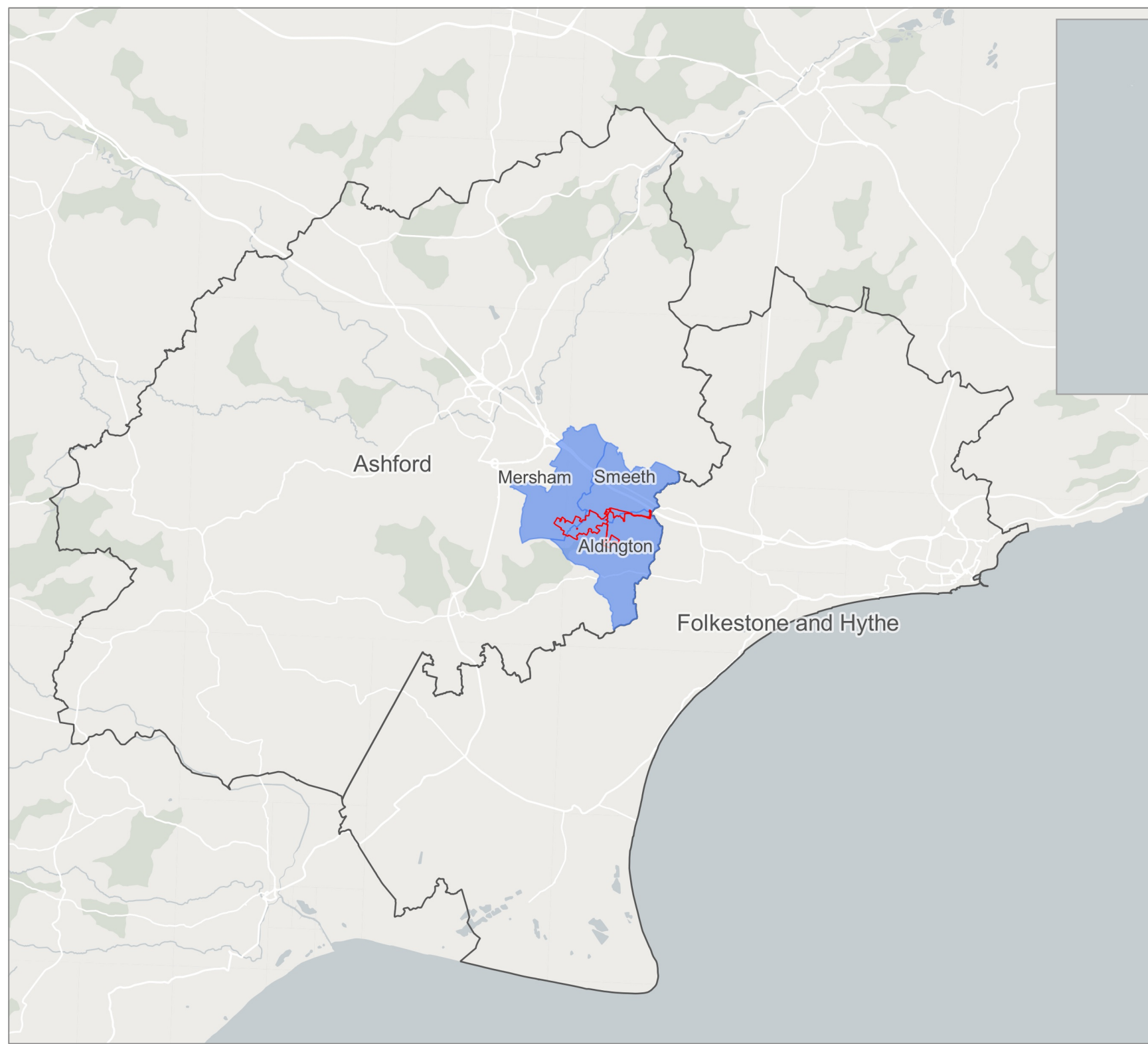
The Infrastructure Planning (Applications: Prescribed Forms and Procedure) Regulations 2009



# 5.3 Environmental Statement Volume 3 Figures

## Chapter 12: Socio-Economics

Drawing Number	Revision	Drawing Title	Scale
5.5.01	01	Figure 12.2: Socio-economic Study Areas	1:360,000 @ A4
5.4.02	01	Figure 12.2: Community, Recreational and Tourist Facilities within 1km of the Site	1:45,000 @ A4



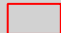
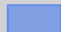

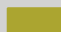

-  Order limits
-  Local Study Areas (Parishes)
-  Wider Study Area (Districts)
-  Kent County Council
-  South East Region

Figure 12.1  
 Version No. 01  
 APFP Regulation Code 5(2)(a)  
 Stonestreet Green Solar  
 Drawing No. 5.5.01  
 Socioeconomic Study Areas



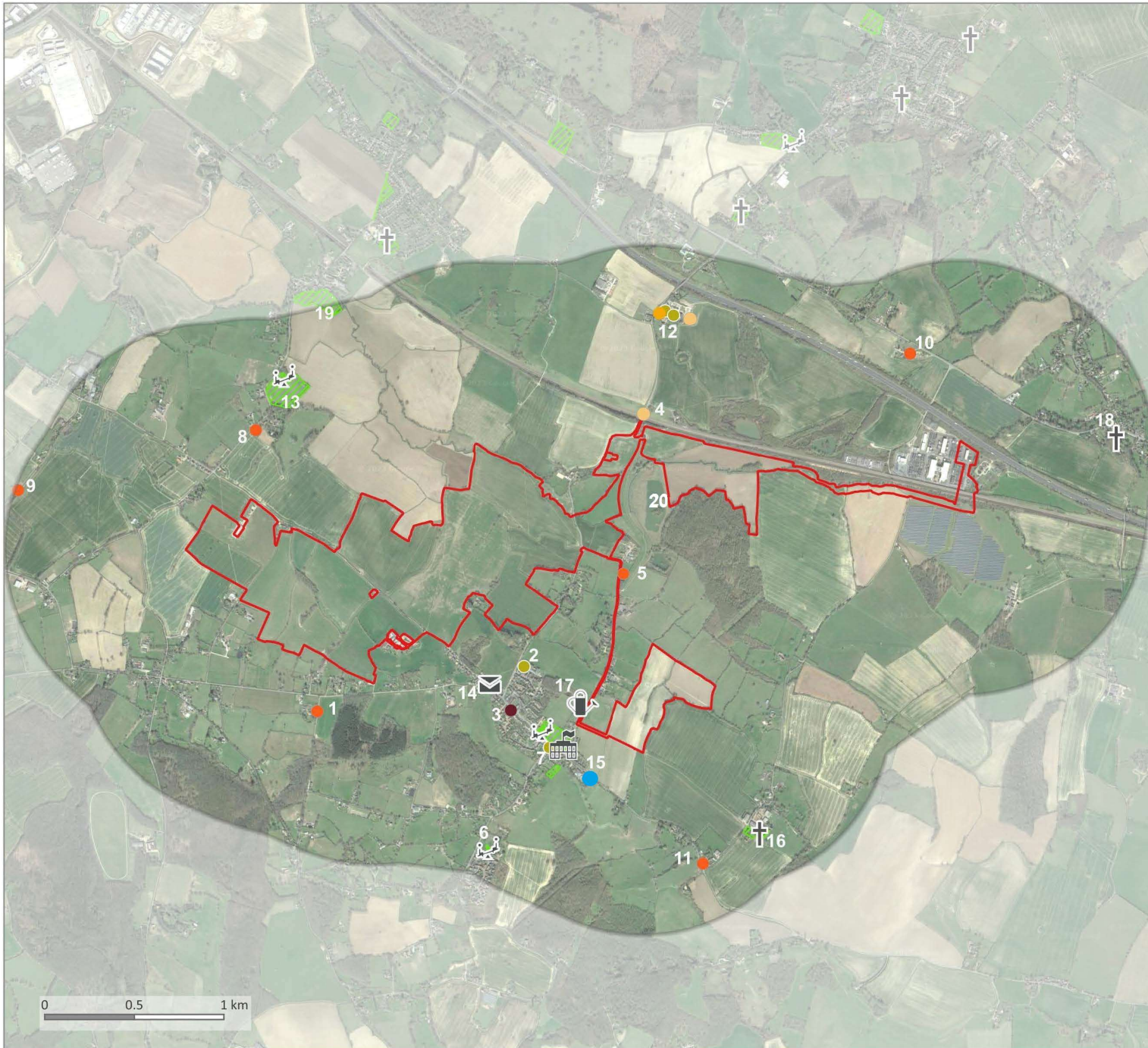
Date: May 2024      Created by: Quod

Scale: 1:360,000 @ A4



21 Soho Square  
 London  
 W1D 3QP  
 020 3597 1000  
 www.quod.com





- Order limits
- ⬡ 1km Catchment Area
- 🏠 Aldington Eco Centre
- ✝ Places of Worship
- 🎡 Play Space
- ✉ Post Office
- 🏛 Village Hall
- 🌿 Open Space
- Schools
- Primary School
- Recreational and Tourist Facilities
- Childcare
- Food and beverage
- Hospitality
- Accommodation
- Cultural use
- Retail

Figure 12.2  
 Version No. 01  
 APFP Regulation Code 5(2)(a)  
 Stonestreet Green Solar  
 Drawing No. 5.4.02  
 Community, Recreational and  
 Tourist Facilities within 1km

May 2024 | Created by Quod

Scale: 1:45,000 @ A4

